

## ASX ANNOUNCEMENT / MEDIA RELEASE

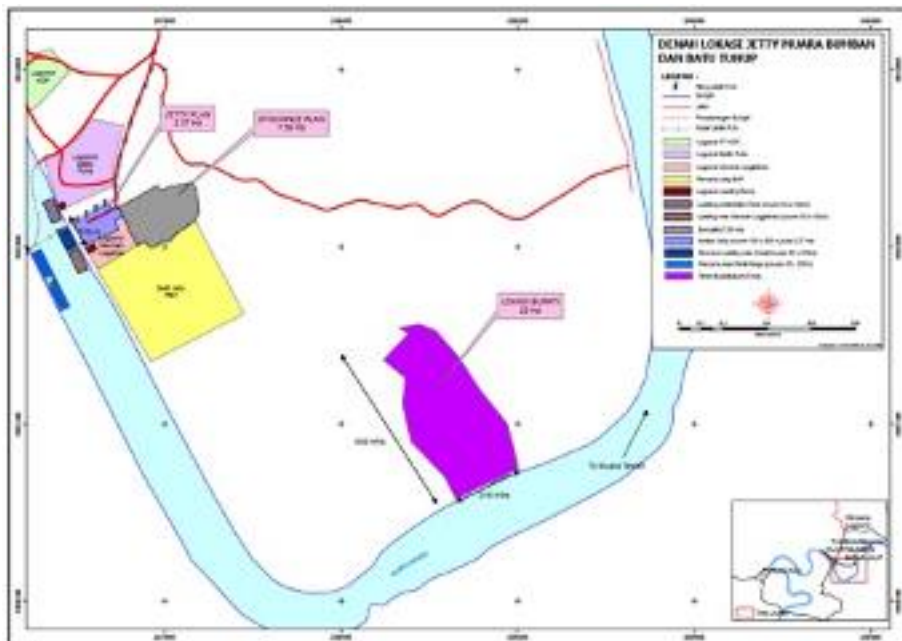
9 August 2021

### Progress Towards Mining at BBM

#### Key Highlights

- Jetty site for barge loading selected at Batu Tuhup
- Preliminary layout completed
- Consultants being selected for engineering and construction
- Lidar survey of site contracted to start next week
- Bathymetric survey of the site to start next week
- Downriver Intermediate Stockpile (ISP) site selected at Buntok
- Lidar survey of this site contracted to follow survey at Batu Tuhup
- Road into Pit 3 reaches 68km mark having constructed 5 bridges and 10 culverts
- Mining contractor mobilisation details being finalised

The site has been selected for the jetty to load barges at Batu Tuhup, about 1.5km from the temporary jetty site BBM has contracted to use for the first year.



Batu Tuhup Jetty Site

For personal use only

This site has more than 300m frontages on the Barito River and at this location has more than 2.5m water depth all year long. A preliminary layout has been completed to be detailed when the topography and bathymetry survey results are available. The barge loader will be capable of 1,000 t/h.

A contractor has been engaged to undertake a lidar survey of topography and a second contractor to undertake a bathymetric survey, both to be done next week once the current covid restrictions PPKM Level 4 is complete.

The downriver ISP will be at Buntok. A lidar topographical survey of this site will be conducted as soon as the Batu Tuhup survey is completed.

Progress on the road from km 52 into Pit 3 at BBM has been progressed with a number of bridges and culverts being constructed. Additional equipment has been mobilised to increase the rate of this progress.



**Toloh River Bridge; Logs Trucked to Merah River Bridge**

For personal use only



**Merah River Bridge Abutment Construction**

**Korot River Bridge at km 64.5**



For personal use only



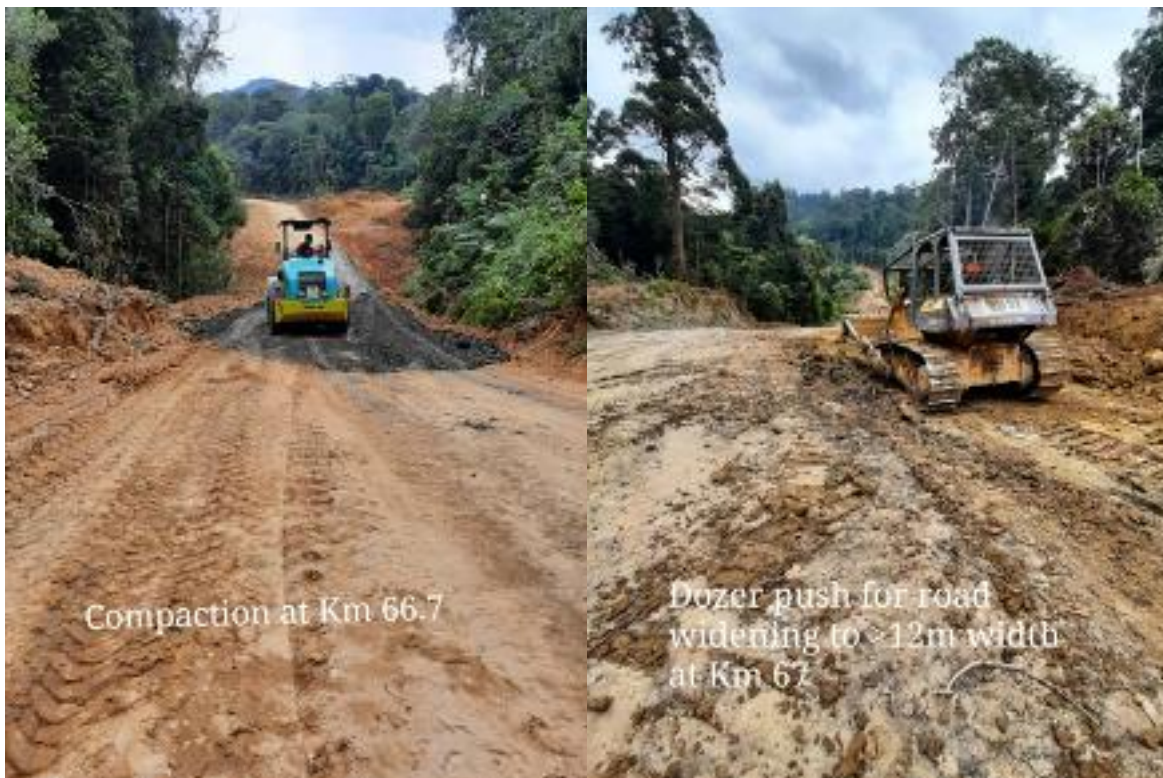
**Aoi River (km 66) and Tasang River (km 67) Vegetation to be Cleared**



The remnants of old bridges are dismantled, any reusable logs recovered and a new bridge constructed. Then the road is cleared to access the next bridge. Many of the old bridges failed because geofabric was

For personal use only

not used to cover the logs before placing road construction fill over them. Some significant cuts have been excavated.



For personal use only



**ENDS**

**Further enquiries:**

Domenic Martino Non-Executive  
Chairman [dmartino@cokal.com](mailto:dmartino@cokal.com)

*This ASX announcement was authorised for release by the Board of Cokal Limited.*

About Cokal Limited

Cokal Limited (ASX:CKA) is an Australian listed company with the objective of becoming a metallurgical coal producer with a global presence. Cokal has interests in four projects in Central Kalimantan, Indonesia considered prospective for metallurgical coal.

Forward Looking Statements

This release includes forward looking statements. Often, but not always, forward looking statements can generally be identified by the use of forward looking words such as “may”, “will”, “expect”, “intend”, “plan”, “estimate”, “anticipate”, “continue”, and “guidance”, or other similar words and may include, without limitation statements regarding plans, strategies and objectives of management, anticipated production or construction commencement dates and expected costs or production outputs.

Forward looking statements inherently involve known and unknown risks, uncertainties and other factors that may cause the company’s actual results, performance and achievements to differ materially from any future results,

For personal use only

performance or achievements. Relevant factors may include, but are not limited to, changes in commodity prices, foreign exchange fluctuations and general economic conditions, increased costs and demand for production inputs, the speculative nature of exploration and project development, including the risks of obtaining necessary licences and permits and diminishing quantities or grades of resources or reserves, political and social risks, changes to the regulatory framework within which the company operates or may in the future operate, environmental conditions including extreme weather conditions, recruitment and retention of personnel, industrial relations issues and litigation.

Forward looking statements are based on the company and its management's good faith assumptions relating to the financial, market, regulatory and other relevant environments that will exist and affect the company's business and operations in the future. The company does not give any assurance that the assumptions on which forward looking statements are based will prove to be correct, or that the company's business or operations will not be affected in any material manner by these or other factors not foreseen or foreseeable by the company or management or beyond the company's control.

Although the company attempts to identify factors that would cause actual actions, events or results to differ materially from those disclosed in forward looking statements, there may be other factors that could cause actual results, performance, achievements or events not to be anticipated, estimated or intended, and many events are beyond the reasonable control of the company. Accordingly, readers are cautioned not to place undue reliance on forward looking statements.

Forward looking statements in this release are given as at the date of issue only. Subject to any continuing obligations under applicable law or any relevant stock exchange listing rules, in providing this information the company does not undertake any obligation to publicly update or revise any of the forward looking statements or to advise of any change in events, conditions or circumstances on which any such statement is based.

For personal use only